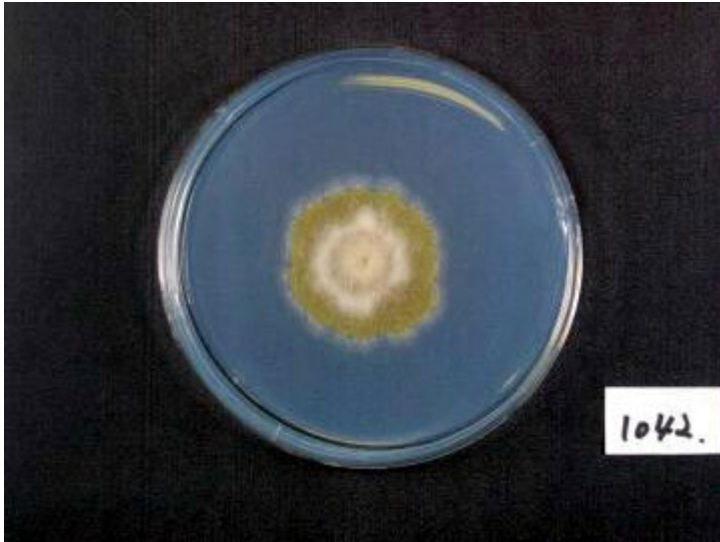
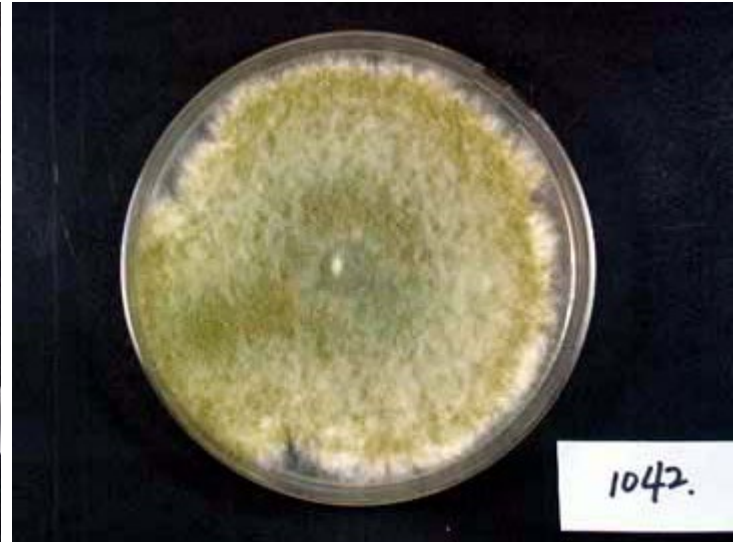


# RIB1042

*A. sojae* Sakaguchi et Yamada



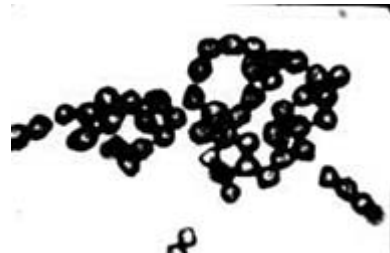
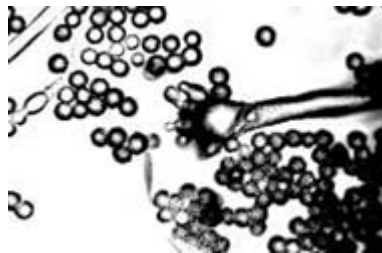
Colony on CD plate



Colony on koji extract plate

## Mycological characters

Color of old slant culture	Diameter (mm) of colony at 34 C	Reverse side of Colony		Sclerotia
		Wrinkling	Color	
1	6	5	3	1
Roughness of stalk	Length of stalk (mm)	Diameter of vesicles (μ)	Roughness of conidia	Diameter of conidia (μ)
2	4	1	6	2
Ratio of biseriata sterigmata (%)	Production			
	Kojic acid	Pigments	Aflatoxins	Amylase
1	5	3	1	2
Coloration of hydroquinone	Reduction of methylene blue	Browning of rice koji	Pink color of conidia in meidium with	
			Anisic acid	Anisaldehyde
1	1	1	4	1
Note	<p><i>A. sojae</i> IAM 2664 &lt;- ACTU, Sakaguchi SH-1-2, Higeta                      ITS type B, AFHC type <i>A. sojae</i> (Tominaga et. al, AEM, 72, 484 (2006), Kiyota et. al, JBB, 111, 512 (2011))</p>			



Photographs of conidiophore