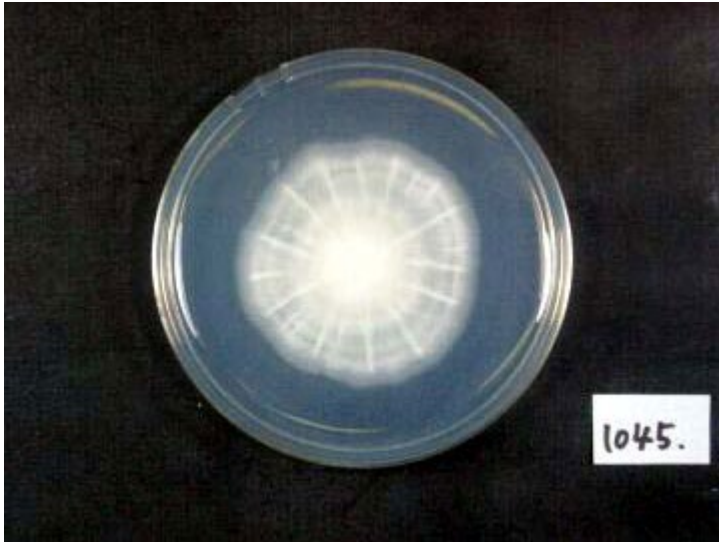
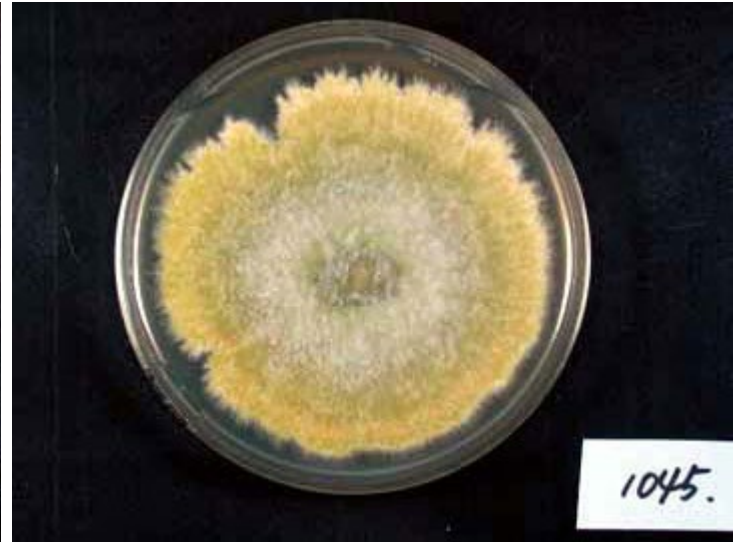


RIB1045

A. sojae Sakaguchi et Yamada



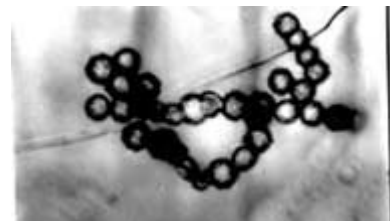
Colony on CD plate



Colony on koji extract plate

Mycological characters

Color of old slant culture	Diameter (mm) of colony at 34 C	Reverse side of Colony		Sclerotia
		Wrinkling	Color	
1	4	1	1	1
Roughness of stalk	Length of stalk (mm)	Diameter of vesicles (μ)	Roughness of conidia	Diameter of conidia (μ)
1	3	1	6	2
Ratio of biseriata sterigmata (%)	Production			
	Kojic acid	Pigments	Aflatoxins	Amylase
1	4	2	1	2
Coloration of hydroquinone	Reduction of methylene blue	Browning of rice koji	Pink color of conida in meidium with	
			Anisic acid	Anisaldehyde
1	2	2	2	1
Note	<p><i>A. sojae</i> IAM 2669 <- ACTU, Sakaguchi SH-10-6, Kikkoman ITS type B, AFHC type <i>A. sojae</i> (Tominaga et. al, AEM, 72, 484 (2006), Kiyota et. al, JBB, 111, 512 (2011))</p>			



Photographs of conidiophore