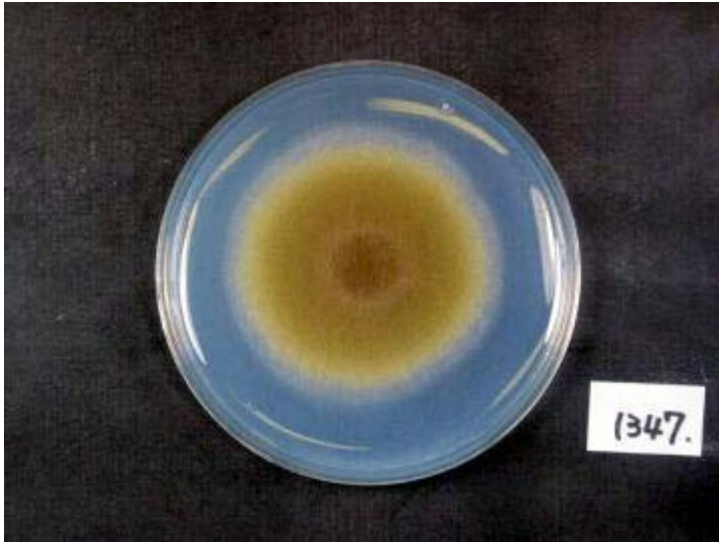


# RIB1347

*A.oryzae* var. *brunneus* Murakami



Colony on CD plate



Colony on koji extract plate

## Mycological characters

Color of old slant culture	Diameter (mm) of colony at 34 C	Reverse side of Colony		Sclerotia
		Wrinkling	Color	
1	3	1	4	1
Roughness of stalk	Length of stalk (mm)	Diameter of vesicles (μ)	Roughness of conidia	Diameter of conidia (μ)
6	5	5	3	5
Ratio of biseriata sterigmata (%)	Production			
	Kojic acid	Pigments	Aflatoxins	Amylase
1	6	4	1	4
Coloration of hydroquinone	Reduction of methylene blue	Browning of rice koji	Pink color of conida in meidum with	
			Anisic acid	Anisaldehyde
5	2	3	4	1
Note	IAM 2682 <i>A. oryzae</i> var. <i>magnasporus</i> S.et Y. (1969)-ACTU Sakaguchi SH-8-2 ITS type B, AFHC type A. <i>sojae</i> (Tominaga et. al, AEM, 72, 484 (2006), Kiyota et. al, JBB, 111, 512 (2011))			