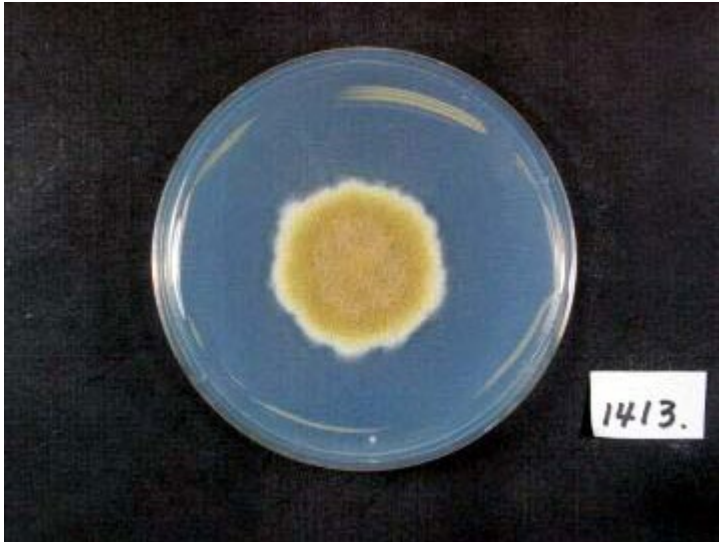
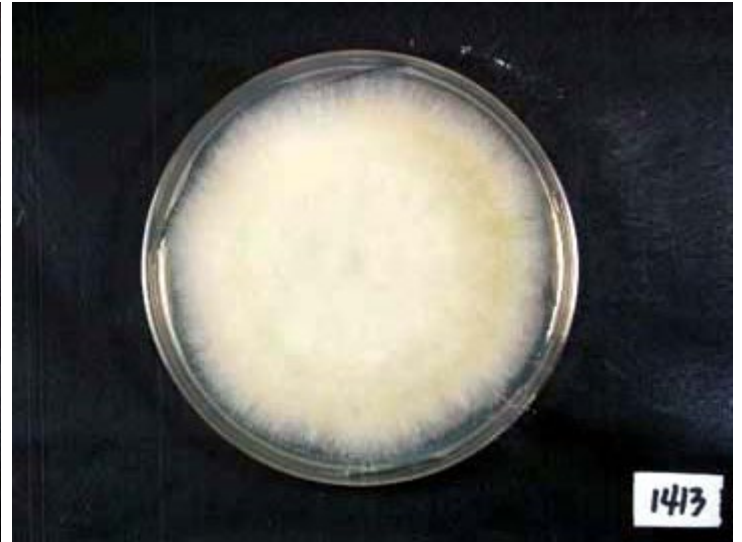


RIB1413

A.oryzae var. *brunneus* Murakami



Colony on CD plate



Colony on koji extract plate

Mycological characters

Color of old slant culture	Diameter (mm) of colony at 34 C	Reverse side of Colony		Sclerotia
		Wrinkling	Color	
1	4	3	1	1
Roughness of stalk	Length of stalk (mm)	Diameter of vesicles (μ)	Roughness of conidia	Diameter of conidia (μ)
4	1	2	4	2
Ratio of biseriata sterigmata (%)	Production			
	Kojic acid	Pigments	Aflatoxins	Amylase
1	3	1	1	2
Coloration of hydroquinone	Reduction of methylene blue	Browning of rice koji	Pink color of conidia in meidum with	
			Anisic acid	Anisaldehyde
4	4	1	2	2
Note	IAM 2118 <i>A. flavus</i> Link (1969)-SSES, strain Mo ITS type A2a, AFHC type <i>A. oryzae</i> group1 (Tominaga et. al, AEM, 72, 484 (2006), Kiyota et. al, JBB, 111, 512 (2011))			