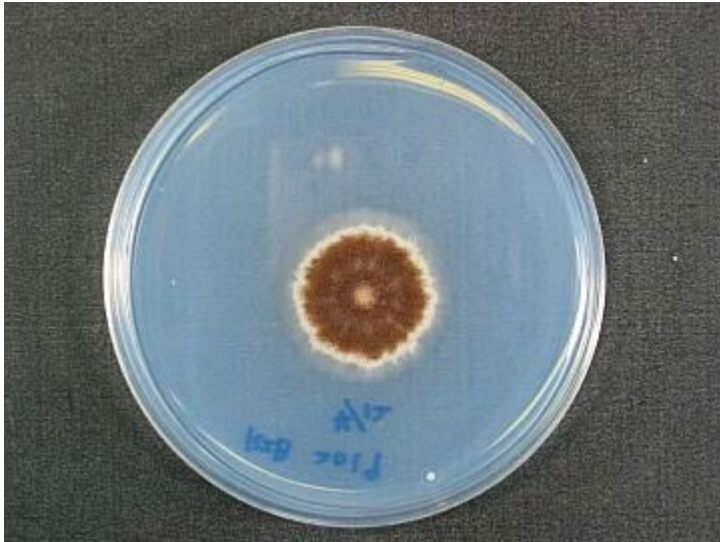
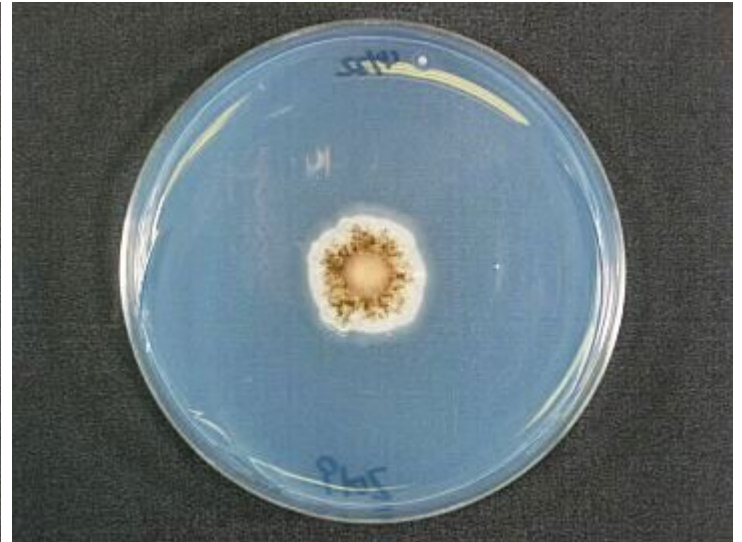


# RIB2019

## *Aspergillus luchuensis*



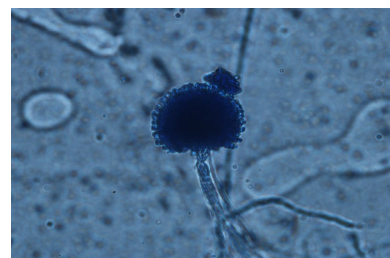
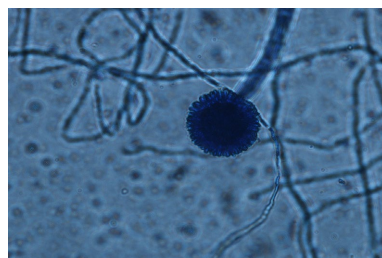
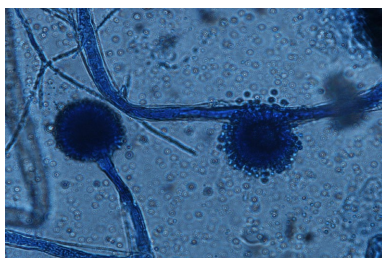
Colony on CD plate



Colony on CD(NO2) plate

### Mycological characters

| Color of old slant culture        | Diameter (mm) of colony at 34 C   | Reverse side of Colony   |                                       | Sclerotia               |
|-----------------------------------|---|--------------------------|---------------------------------------|-------------------------|
|                                   |   | Wrinkling                | Color                                 |                         |
|                                   |   |                          |                                       |                         |
| Roughness of stalk                | Length of stalk (mm)  | Diameter of vesicles (μ) | Roughness of conidia                  | Diameter of conidia (μ) |
|                                   |   |                          |                                       |                         |
| Ratio of biseriata sterigmata (%) | Production  |                          |                                       |                         |
|                                   | Kojic acid  | Pigments                 | Aflatoxins                            | Amylase                 |
|                                   |   |                          |                                       |                         |
| Coloration of hydroquinone        | Reduction of methylene blue   | Browning of rice koji    | Pink color of conidia in meidium with |                         |
|                                   |   |                          | Anisic acid                           | Anisaldehyde            |
|                                   |   |                          |                                       |                         |
| Note                              | NBRC4338 <i>A. foetidus</i> , CBS103.14, IFM47644, <i>A. luchuensis</i><br><i>A. luchuensis</i> (Yamada et. al, JBB, 112, 233 (2011)) |                          |                                       |                         |



Photographs of conidiophore