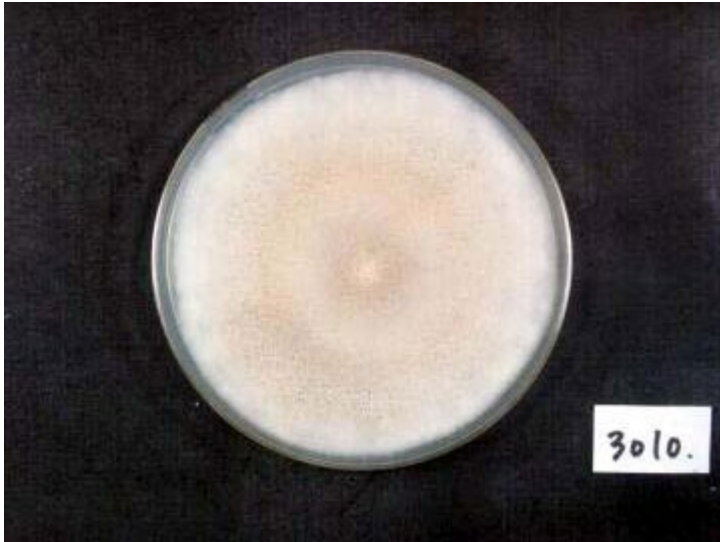


# RIB3010

*A. tamarii* Kita



Colony on CD plate



Colony on koji extract plate

## Mycological characters

Color of old slant culture	Diameter (mm) of colony at 34 C	Reverse side of Colony		Sclerotia
		Wrinkling	Color	
Br	4	1	2	1
Roughness of stalk	Length of stalk (mm)	Diameter of vesicles (μ)	Roughness of conidia	Diameter of conidia (μ)
6	6	5	6	5
Ratio of biseriata sterigmata (%)	Production			
	Kojic acid	Pigments	Aflatoxins	Amylase
1	2	3	1	3
Coloration of hydroquinone	Reduction of methylene blue	Browning of rice koji	Pink color of conidia in medium with	
			Anisic acid	Anisaldehyde
3	2	4	4	3
Note	IAM 2601 A, oryzae (1969)-ACTU , Taka-hashi D (=βEE/font> ITS type <i>A. tamarii</i>			