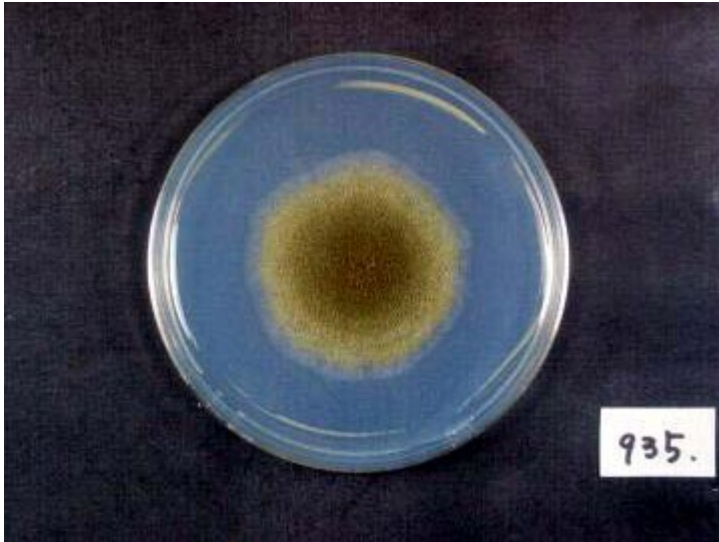
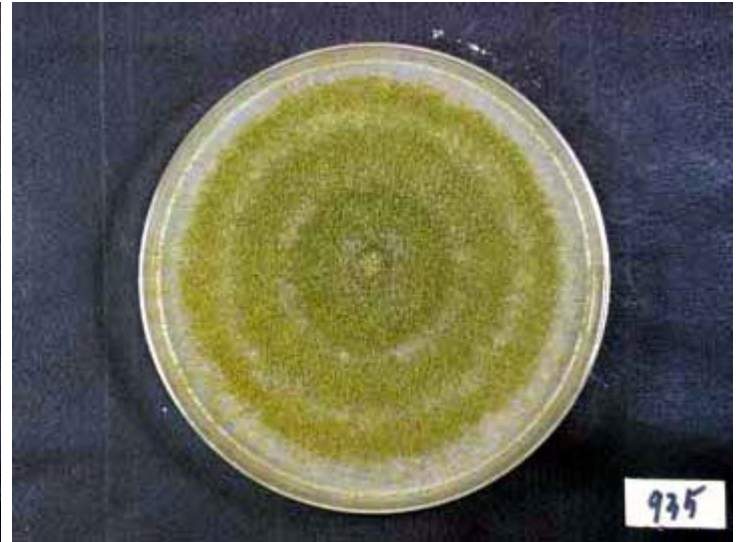


# RIB935

*A. sojae* Sakaguchi et Yamada



Colony on CD plate



Colony on koji extract plate

## Mycological characters

Color of old slant culture	Diameter (mm) of colony at 34 C	Reverse side of Colony		Sclerotia
		Wrinkling	Color	
3	5	2	4	1
Roughness of stalk	Length of stalk (mm)	Diameter of vesicles ( $\mu$ )	Roughness of conidia	Diameter of conidia ( $\mu$ )
5	2	3	5	5
Ratio of biseriata sterigmata (%)	Production			
	Kojic acid	Pigments	Aflatoxins	Amylase
1	5	6	1	1
Coloration of hydroquinone	Reduction of methylene blue	Browning of rice koji	Pink color of conida in meidum with	
			Anisic acid	Anisaldehyde
6	5	1	2	1
Note	from shoyu koji , Shoda shoyu Co. (1969)-K.Matsumoto ITS type B, AFHC type A. sojae (Tominaga et. al, AEM, 72, 484 (2006), Kiyota et. al, JBB, 111, 512 (2011))			