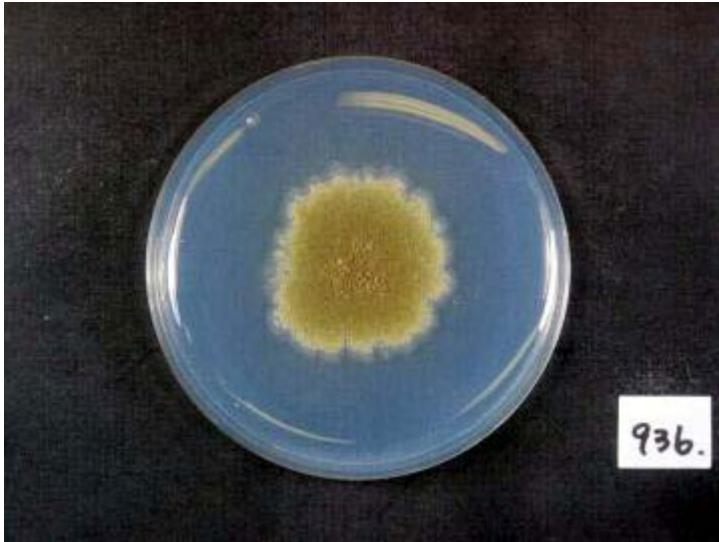
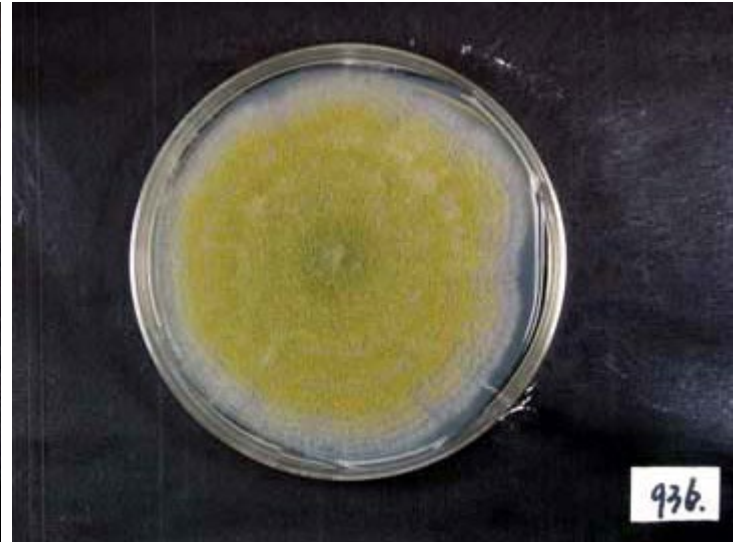


# RIB936

*A.oryzae* var. *viride* Murakami



Colony on CD plate



Colony on koji extract plate

## Mycological characters

Color of old slant culture	Diameter (mm) of colony at 34 C	Reverse side of Colony		Sclerotia
		Wrinkling	Color	
6	4	6	2	1
Roughness of stalk	Length of stalk (mm)	Diameter of vesicles (μ)	Roughness of conidia	Diameter of conidia (μ)
6	1	3	2	4
Ratio of biseriata sterigmata (%)	Production			
	Kojic acid	Pigments	Aflatoxins	Amylase
1	1	3	1	1
Coloration of hydroquinone	Reduction of methylene blue	Browning of rice koji	Pink color of conidia in meidum with	
			Anisic acid	Anisaldehyde
5	6	5	3	1
Note	from shoyu koji, Kikkoman shoyu Co, (1969) -K.Matsumoto ITS type A1a, AFHC type A. oryzae group2 (Tominaga et. al, AEM, 72, 484 (2006), Kiyota et. al, JBB, 111, 512 (2011))			